

ITAL MACHINERY

MACCHINA ITALIANA



**BITUMEN
EMULSION
PLANT**

Bitumen Emulsion Plant is a reliable, highly efficient, compact, easy to use, and economic which is engineered for bitumen emulsion production for road construction projects, asphalt applications, and other special applications.

MAIN FEATURES

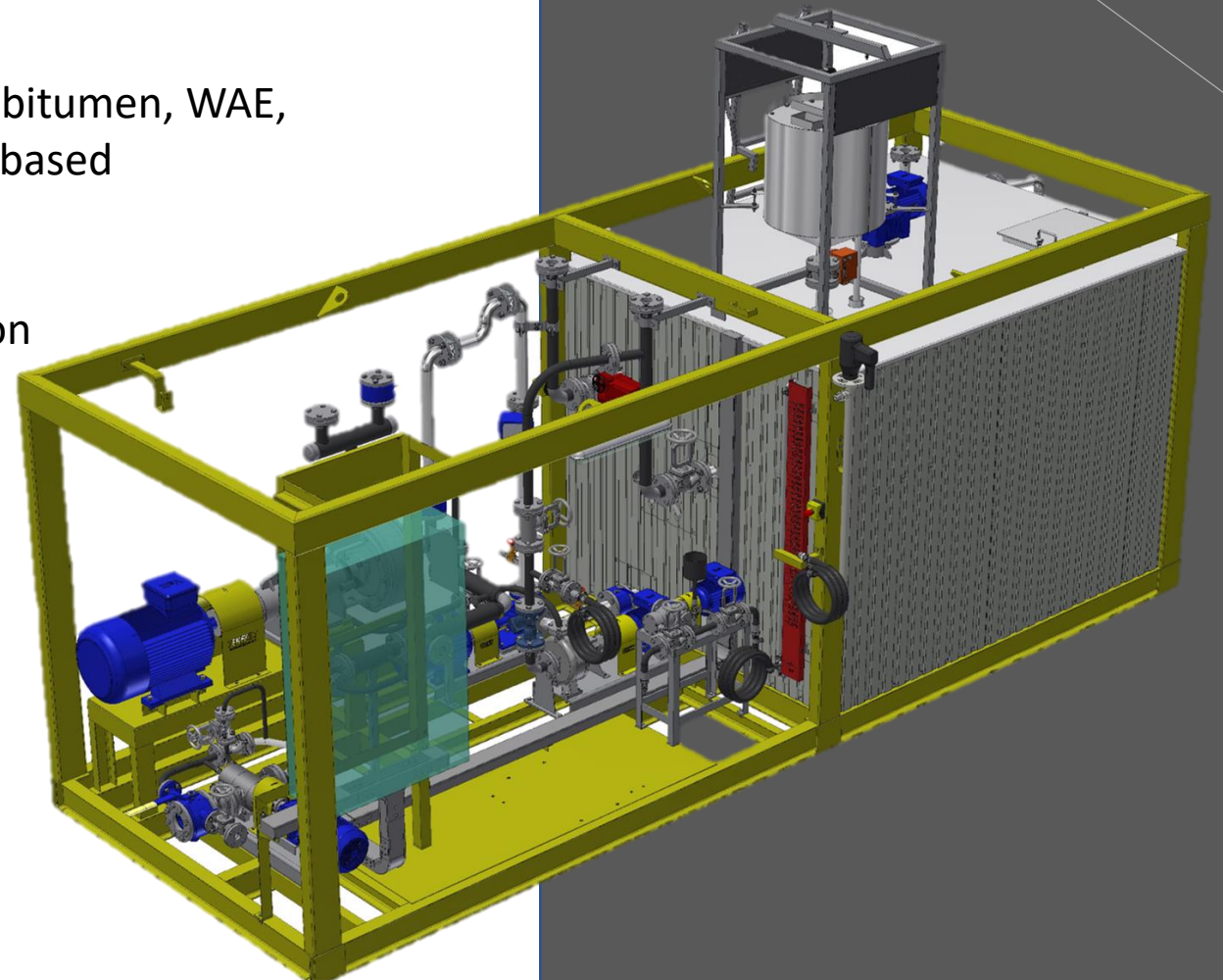
- ◆ **Up to 15t/h**, thermal oil heated.
Transportation; with 1x20' Open Top containers or 1 standard trailer.
- ◆ **Up to 6t/h**, thermal oil heated.
Transportation; with 1x20' Open Top containers or 1 standard trailer.
- ◆ **Special design** colloid mill to produce all types of emulsion with perfect homogeneity.
Divided inlet for WAE and bitumen at the colloid mill to prevent foaming and ensure perfect particle size.
- ◆ **Reliable and controlled** production with thermal oil or electrically heated mill, inverter-controlled bitumen and WAE pump, flowmeters, valves, and piping.



**BITUMEN
EMULSION PLANT**
ITAL MACHINERY
MACCHINA ITALIANA

MAIN FEATURES

- ◆ **Trouble-free and precise production** with robust plant structure equipped with stainless steel water-acid-emulsifier (WAE) tank and acid emulsifier weighing hopper on loadcells, thermostatic controlled stainless steel heating coils.
- ◆ **Ease of operation** by accurate continuous control via bitumen, WAE, and kerosene flowmeters in accordance with receipt-based manufacturing.
- ◆ **Container type** compact design for easy transportation and installation.
- ◆ **Optional:** latex dosing system or exchanger for modified emulsion.
- ◆ **Optional:** electric heated version.



BITUMEN
EMULSION PLANT

ITAL MACHINERY

MACCHINA ITALIANA

GENERAL SPECIFICATIONS

- ◆ **Mill Capacity:** 6 / 15 ton/h (for CRS1: %60 bitumen, %40 Water-Acid-Emulsifier mix.). Up to 6 / 15 ton/h capacity depending on bitumen specifications and receipt.
- ◆ **6 / 15 ton batch capacity** limited Water-Acid-Emulsifier (WAE) mix tank.
- ◆ **Compact design** for easy installation and transportation.
- ◆ **Bitumen has to be heated** in bitumen service tank up to specific temperature for emulsion production.
- ◆ **Heated bitumen shall be** pumped directly to the emulsion mill.
- ◆ **Water will be pumped** in to WAE mix tank of emulsion plant and heated up to specific temperature for emulsion production. Mixed with acid & emulsifier.
- ◆ **No.1 Krohne flow meter** shall be installed at the pressure line of WAE mix dosing pump and WAE flow rate shall be adjusted via inverter – speed adjustment of the pump.
- ◆ **Special HCL** acid resistant lobe type (positive displacement pump) for Water-Acid-Emulsifier (WAE) mix. capacity adjustment via inverter.
- ◆ **Helical gear type** bitumen pump with thermal oil heating jacket.
- ◆ **Helical gear type** emulsifier loading pump for liquid emulsifiers. Special drum pump for HCl acid.
- ◆ **Reliable, problem** free operation with 1st class electrical and electronic components.

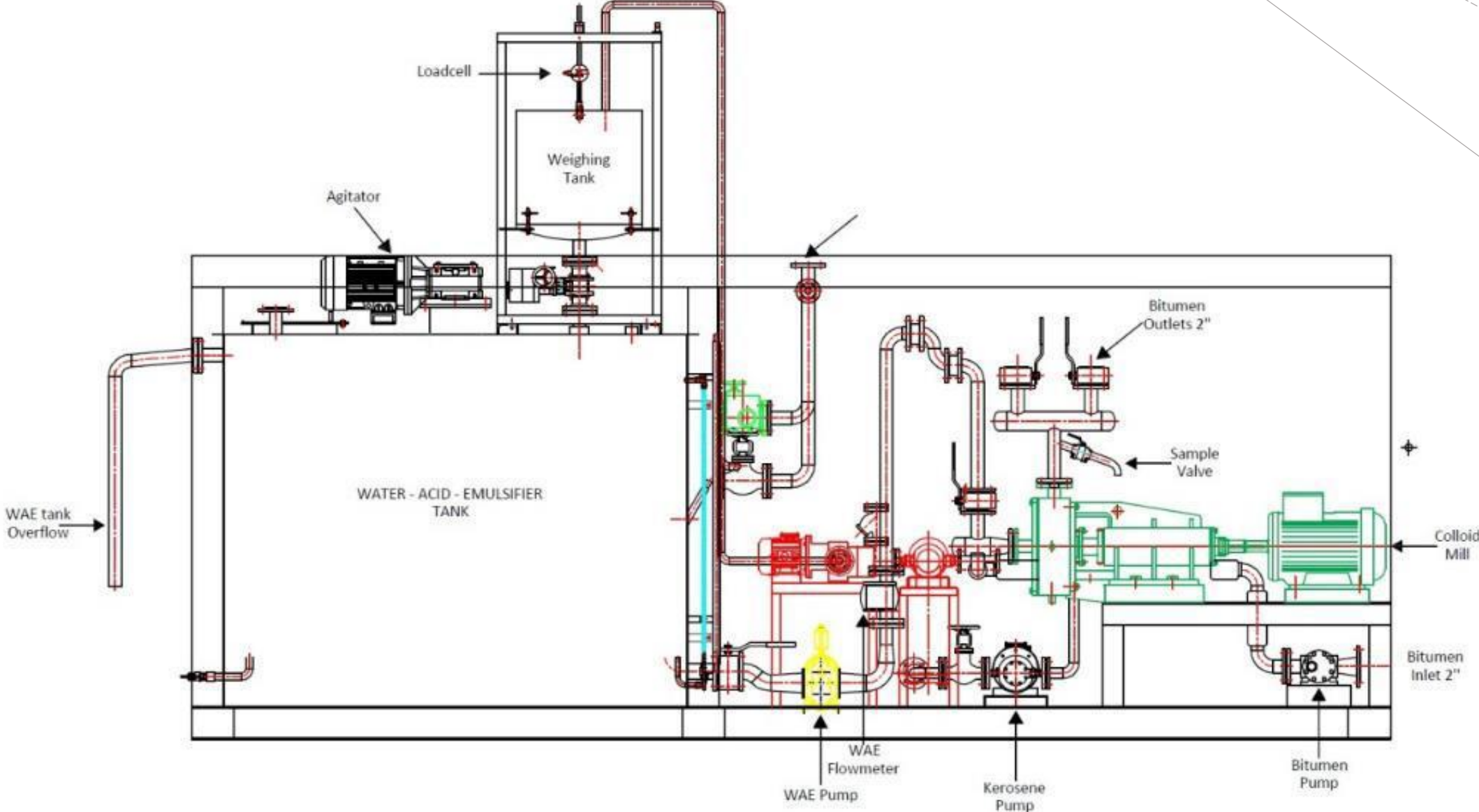


BITUMEN
EMULSION PLANT

ITAL MACHINERY

MACCHINA ITALIANA

PRODUCT OVERVIEW - FLOW CHART



CONTACT US



italmachinery.com.ua



sales@italmachinery.com.ua



+38 (067) 271 61 61

+38 (067) 371 61 61

+38 (067) 801 77 00

+38 (096) 449 32 08



facebook.com/italmachinery



[@italmachinery](https://instagram.com/italmachinery)



[Ital Machinery](https://YouTube.com/ItalMachinery)

ITAL MACHINERY
MACCHINA ITALIANA

